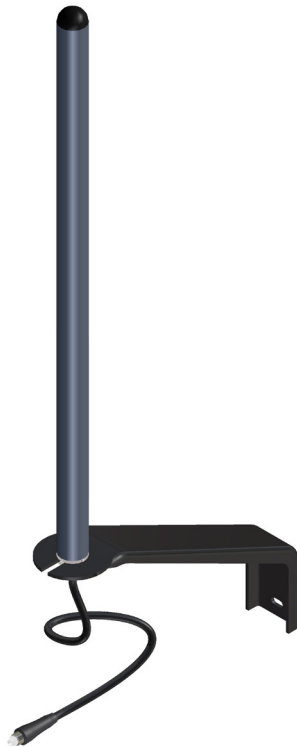


Product Data Sheet

Multiband Bracket Mount Antenna

M2M & ISM Band

Bracket Mount Antenna



B2B-C3G-5F

Improves range

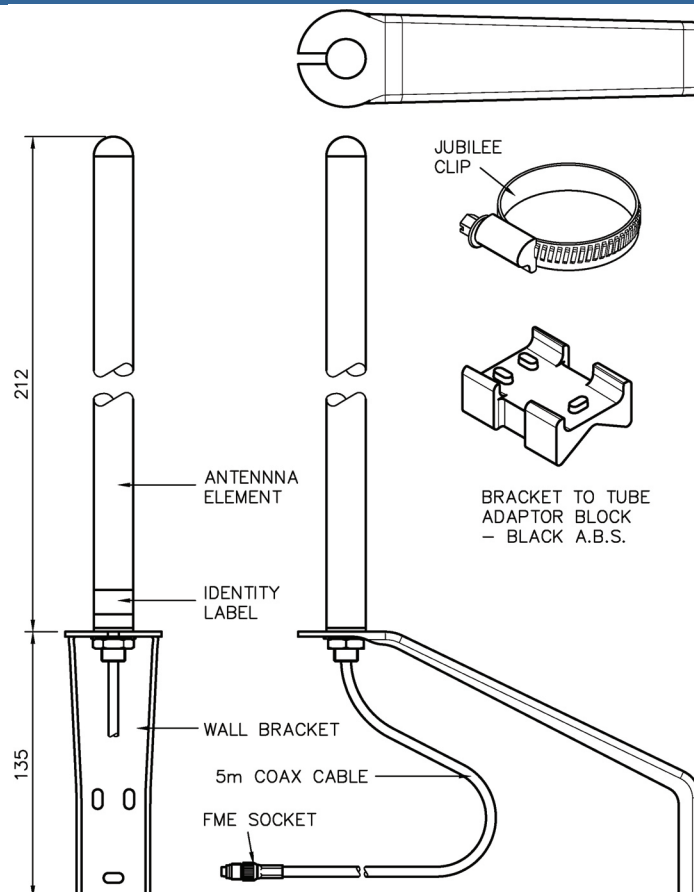
Cost effective solution

Easy installation

The B2B range is designed for machines that need to communicate easily with each other. The omni-directional radiation pattern makes them simple to install because no networking software or analysis is required to find the optimum position.

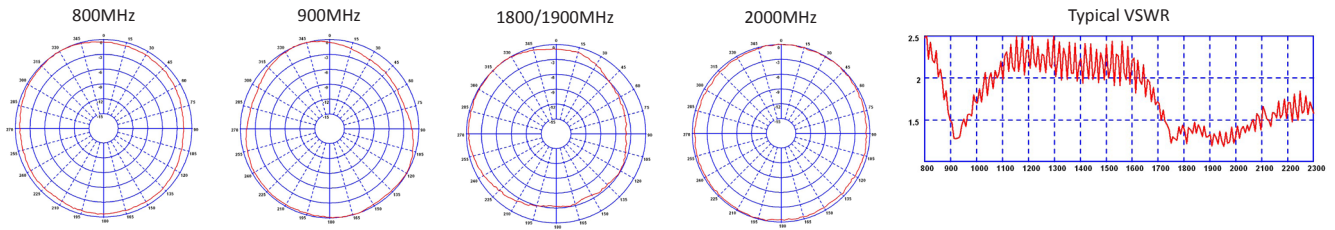
These antennas can be used to create a 'Mesh Network' enabling the machine to be in constant communication with its base because the data can re-configure its route around broken paths.

Technical Drawing



M2M & ISM Band Antennas

Bracket Mount Antennas



Part No.		
B2B-C3G-5F		
Electrical Data		
Frequency Range (MHz)		805-960 & 1710-2170
Pre-Tuned Band		AMPS800, GSM900, GSM1800, PCS1900 & 3G UMTS
Gain: Isotropic		2dBi (on all frequencies)
Compared to ¼ wave		0dB (on all frequencies)
Polarisation		Vertical
Pattern		Omni Directional
Impedance		50Ω
Max Input Power (W)		10
Mechanical Data		
Dimensions (mm)	Height	212
	Diameter	20
Operating Temp (°C)		-40° / +80°C
Material		Engineering Plastic
Colour		Grey
Mounting Data		
Fixing		Bracket Mount
Mounting Bracket Dimensions (mm)	Height	135
	Off-Set	180
Cable Data		
Type		Low Loss URM76 Coax
Thickness (mm)		5
Length (m)		5
Termination		FME Socket



Panorama Antennas Ltd
Frogmore, London, SW18 1HF, United Kingdom

T: +44 (0)20 8877 4444
F: +44 (0)20 8877 4477

E: sales@panorama-antennas.com
www.panorama-antennas.com

PANORAMA  *ANTENNAS*